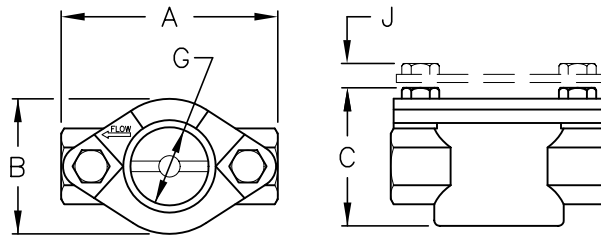
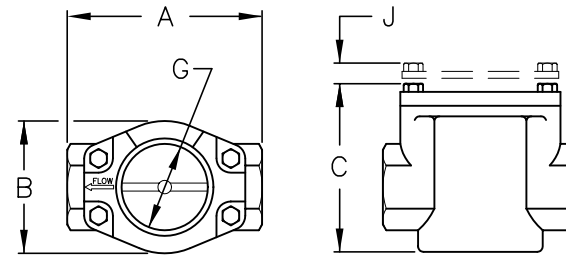


THREADED KSF SIGHT FLOWS

Threaded models are offered in standard NPTF sizes for pipes ranging from 1/4" to 2".



1/4" THRU 1" SIZE



1-1/4" THRU 2" SIZE

DIMENSIONS FOR THREADED SIGHT FLOWS

Thread Size	1/4"	3/8"	1/2"	3/4"	1"	1-1/4"	1-1/2"	2"
A Overall Length	3-1/4 ¹	3-1/4 ¹	3-1/4 ¹	4-1/4 ²	4-1/4	5-1/4 ³	5-1/4 ³	5-1/2 ³
B Overall Width	2	2	2	2-9/16	2-9/16	3-5/16	3-5/16	3-5/16
C Overall Height (ST Series)	2-3/8	2-3/8	2-3/8	3-1/4	3-1/4	4-5/16	4-5/16	4-5/16
Overall Height (HT Series)	2-9/16	2-9/16	2-9/16	3-7/16	3-7/16	4-1/2	4-1/2	4-1/2
G Sight Opening Diameter	1-1/8	1-1/8	1-1/8	1-1/2	1-1/2	2	2	2
J Added Height Due to Shield	7/16	7/16	7/16	1/2	1/2	1/2	1/2	1/2
Total Weight in Pounds	1.6	1.6	1.4	3.0	2.7	8.4	7.9	6.6

¹Stainless Steel Units are 3-5/8"

²Bronze Units are 4-1/8"

³Stainless Steel Units are 5-5/8"

DIMENSION ARE FOR REFERENCE PURPOSES ONLY AND ARE SUBJECT TO CHANGE AT ANY TIME WITHOUT NOTICE.

COPYRIGHT © 2003-KENCO INTERNATIONAL, INC.-ALL RIGHTS RESERVED

REV.	DATE	BY	CHKD.	EXPLANATION:

KENCO ENGINEERING COMPANY
TULSA, OKLAHOMA

INDICATOR, SIGHT FLOW

DATE: 06-12-96	SHEET: 1 OF 1	DRAWING NUMBER
DRN. BY:	CHKD. BY:	KSF-TH
SCALE: NONE	REVISION:	